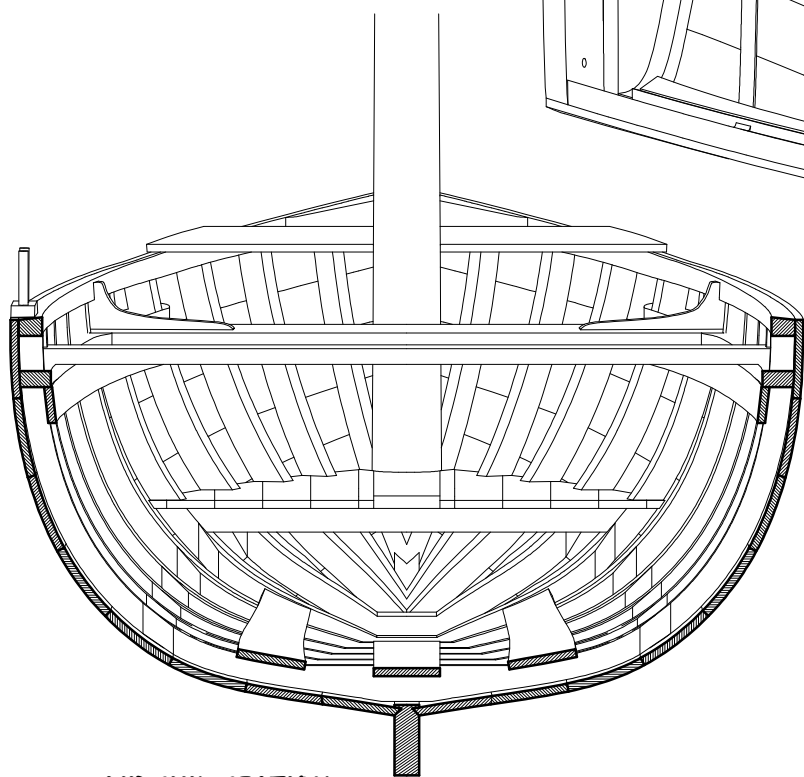
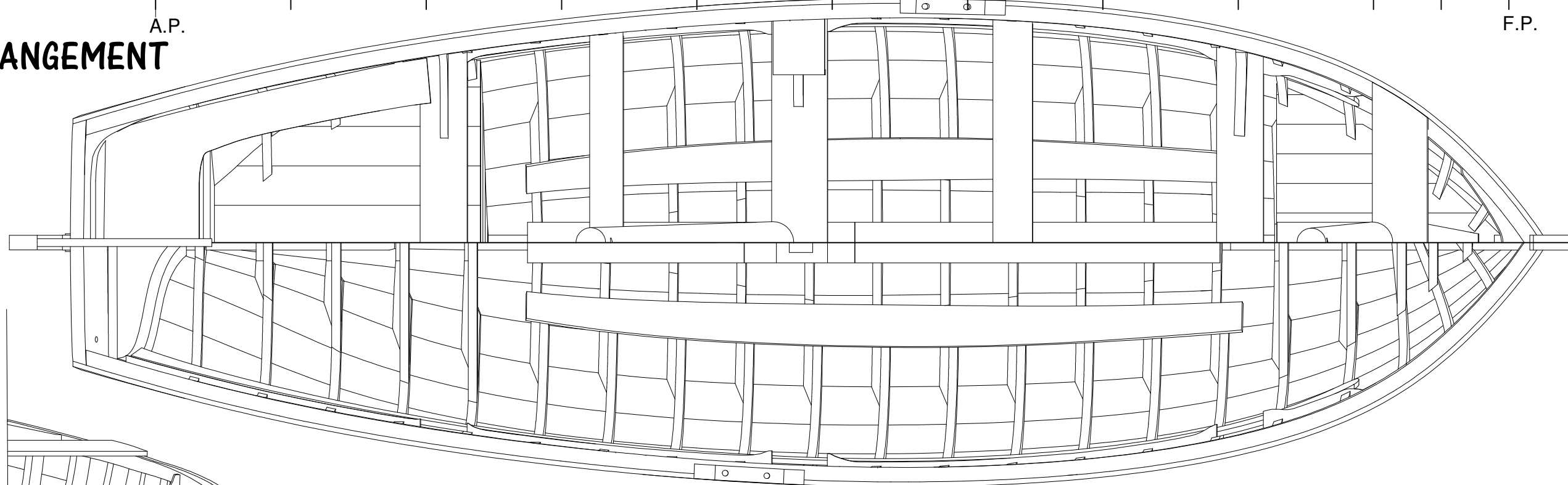


GENERAL ARRANGEMENT



MIDSHIP SECTION

“2 Masted Boat F1993-380”

NOTES

This lines plan was produced by 3D laser scanning the National Museum model
 The boat was then modelled to assign weights and establish Centre of Gravity
 The boat was then ballasted parallel with 1,000 Kg

PRINCIPAL PARTICULARS

Length Overall.....	25.50 ft
Length W.L.....	22.86 ft
Beam.....	8.25 ft
Draught	2.50 ft
Depth	7.10 ft
Displacement.....	2.375 lt
Cp	0.557

Traditional Boats of Ireland Project

DRAWN **P. Tanner**
 DRAWING NUMBER **2**
 MODEL UNITS **feet**

DATE **12/12/2010**
 SHEET **2 of 3 - A 3**
 SCALE **1/2 Inch to 1 foot**

Scale of Feet

