



Traditional Boats of Ireland Project

Digitally recording Irelands maritime heritage

General Information

Daingean 2 Masted Boat

This very detailed model was discovered in the stores of the National Museum.

Based on the rig and general hull form it is thought to be an 18th Century vessel possibly from the south coast.

Full 3D Model

Profile View

Plan View

Section View

Line Drawing View

Structure Only

Strake Diagram

Play Rebuild Animation

A3 Linesplan

A3 General Arrangement

PRINCIPAL PARTICULARS

Length Overall.....	25.50 ft
Length W.L.....	22.86 ft
Beam.....	8.25 ft
Draught	2.50 ft
Depth	7.10 ft
Displacement.....	2.375 lt
Cp	0.557



Photo of museum model



Computer generated model



Traditional Boats of Ireland Project

Digitally recording Irelands maritime heritage

General Information

Full 3D Model

Profile View

Plan View

Section View

Line Drawing View

Structure Only

Strake Diagram

Play Rebuild Animation

A3 Linesplan

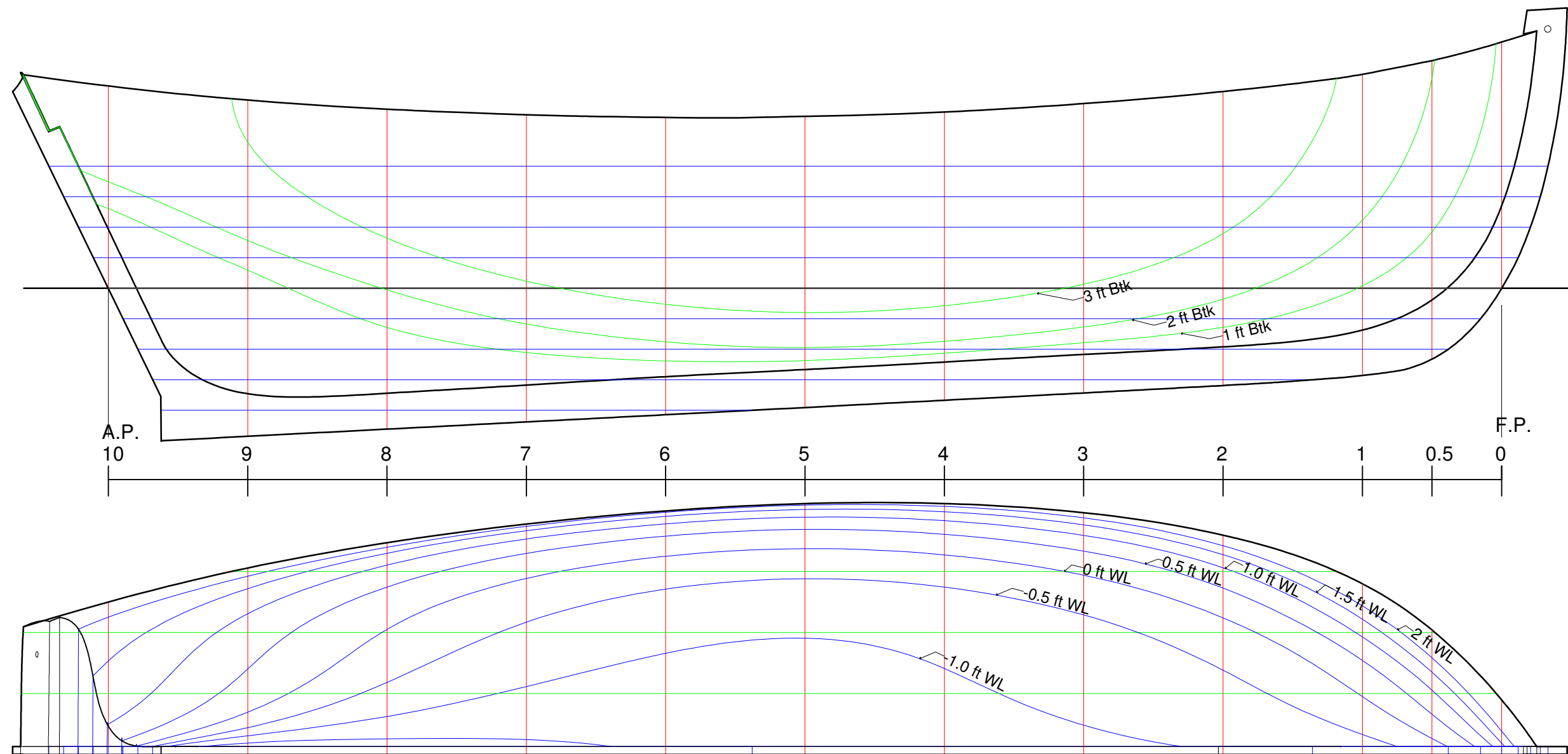
A3 General Arrangement



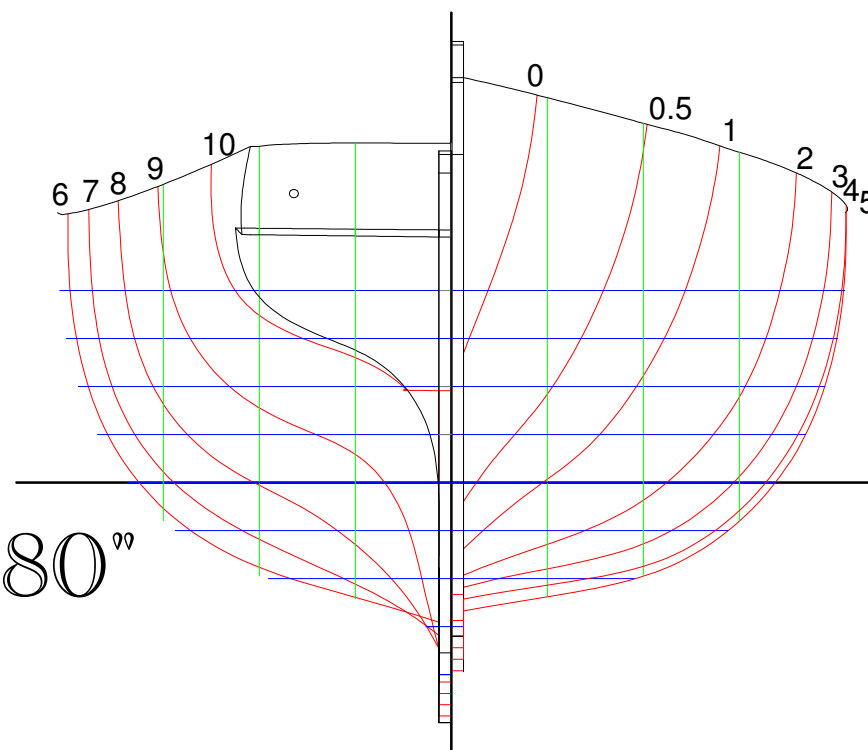
Hold Left Click to rotate

Hold Right Click to zoom

Hold Left & Right click to pan



LINES PLAN



PRINCIPAL PARTICULARS

Length Overall.....	25.50 ft
Length W.L.....	22.86 ft
Beam.....	8.25 ft
Draught	2.50 ft
Depth	7.10 ft
Displacement.....	2.375 lt
Cp	0.557

Traditional Boats of Ireland Project

DRAWN **P. Tanner**
DRAWING NUMBER **1**
MODEL UNITS **feet**

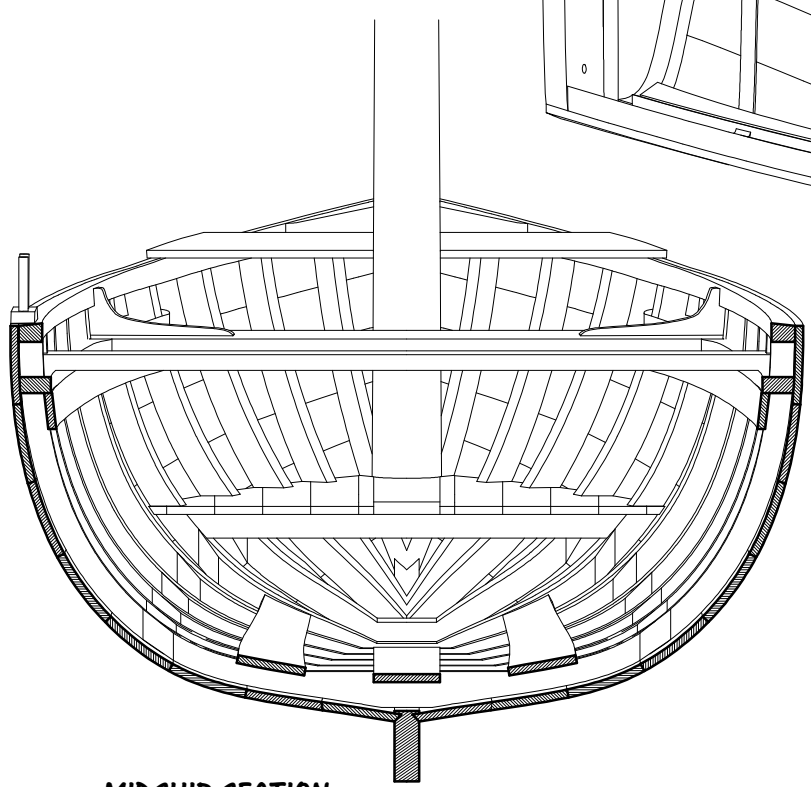
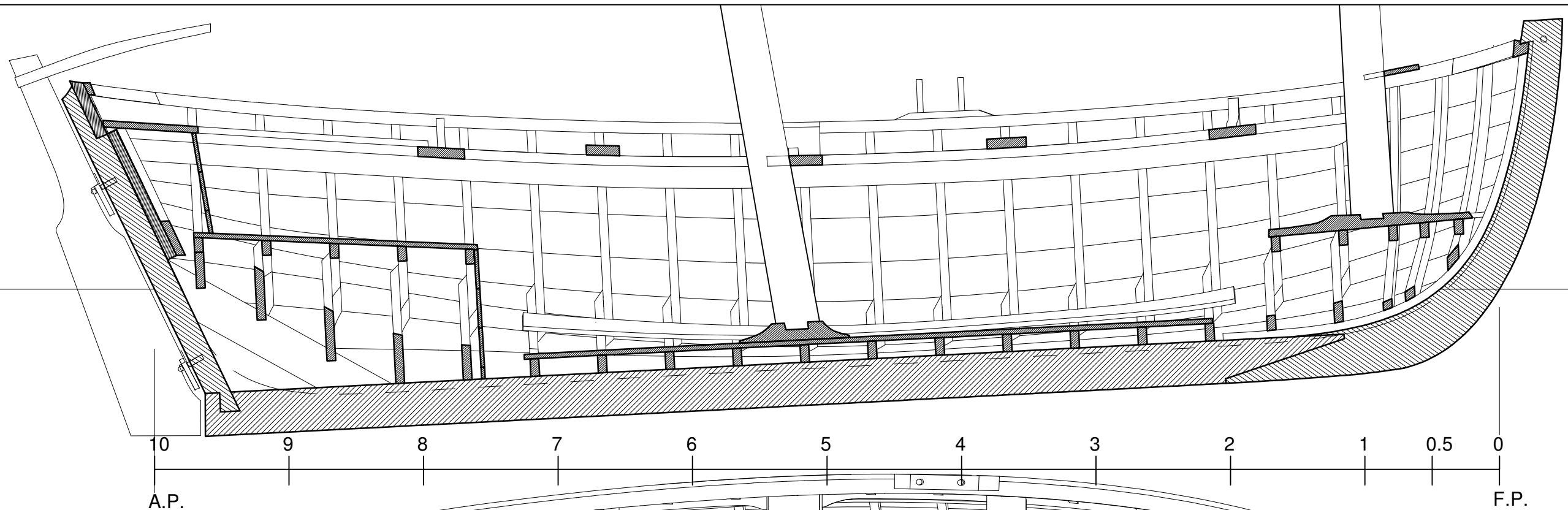
DATE **12/12/2010**
SHEET **1 of 3 - A 3**
SCALE **1/2 Inch to 1 foot**

Daingean 2 Masted Boat F1993-380

NOTES

This lines plan was produced by 3D laser scanning the original model
The boat was then modelled to assign weights and establish Centre of Gravity
The boat was then ballasted parallel with 1,000 Kg
Lines drawn to outside of planking

GENERAL ARRANGEMENT



“Daingean 2 Masted Boat F1993-380”

NOTES

This lines plan was produced by 3D laser scanning the original model
The boat was then modelled to assign weights and establish Centre of Gravity
The boat was then ballasted parallel with 1,000 Kg

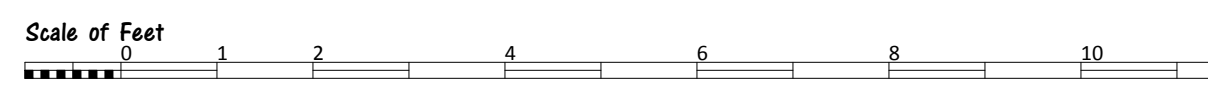
PRINCIPAL PARTICULARS

Length Overall.....	25.50 ft
Length W.L.....	22.86 ft
Beam.....	8.25 ft
Draught	2.50 ft
Depth	7.10 ft
Displacement.....	2.375 lt
Cp	0.557

Traditional Boats of Ireland Project

DRAWN P. Tanner
DRAWING NUMBER 2
MODEL UNITS feet

DATE 12/12/2010
SHEET 2 of 3 - A 3
SCALE 1/2 Inch to 1 foot





Traditional Boats of Ireland Project

Digitally recording Irelands maritime heritage

General Information

Full 3D Model

Profile View

Plan View

Section View

Line Drawing View

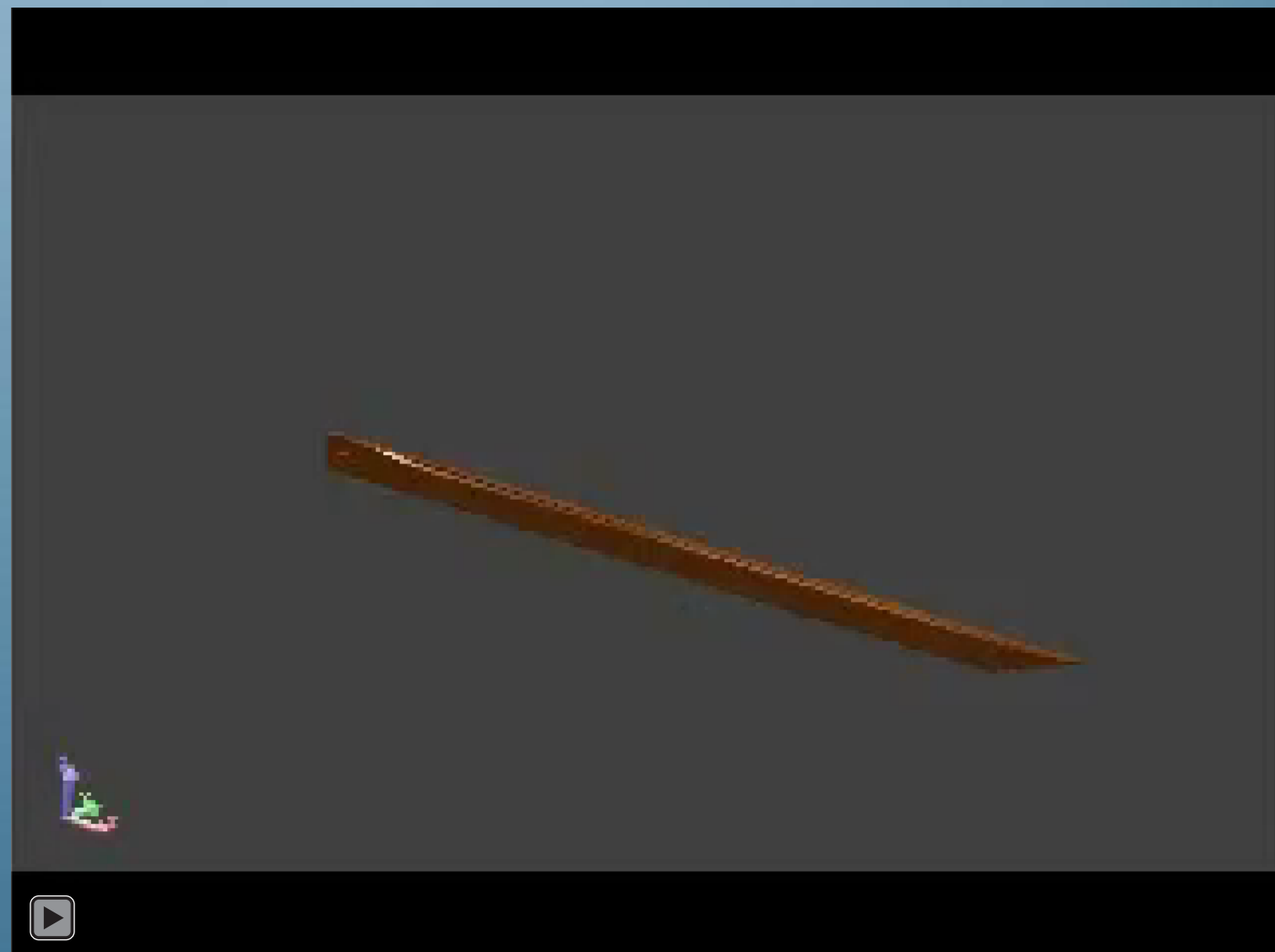
Structure Only

Strake Diagram

Play Rebuild Animation

A3 Linesplan

A3 General Arrangement



Hold Left Click to rotate

Hold Right Click to zoom

Hold Left & Right click to pan