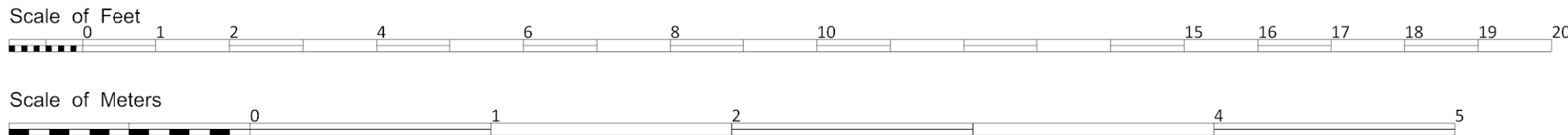
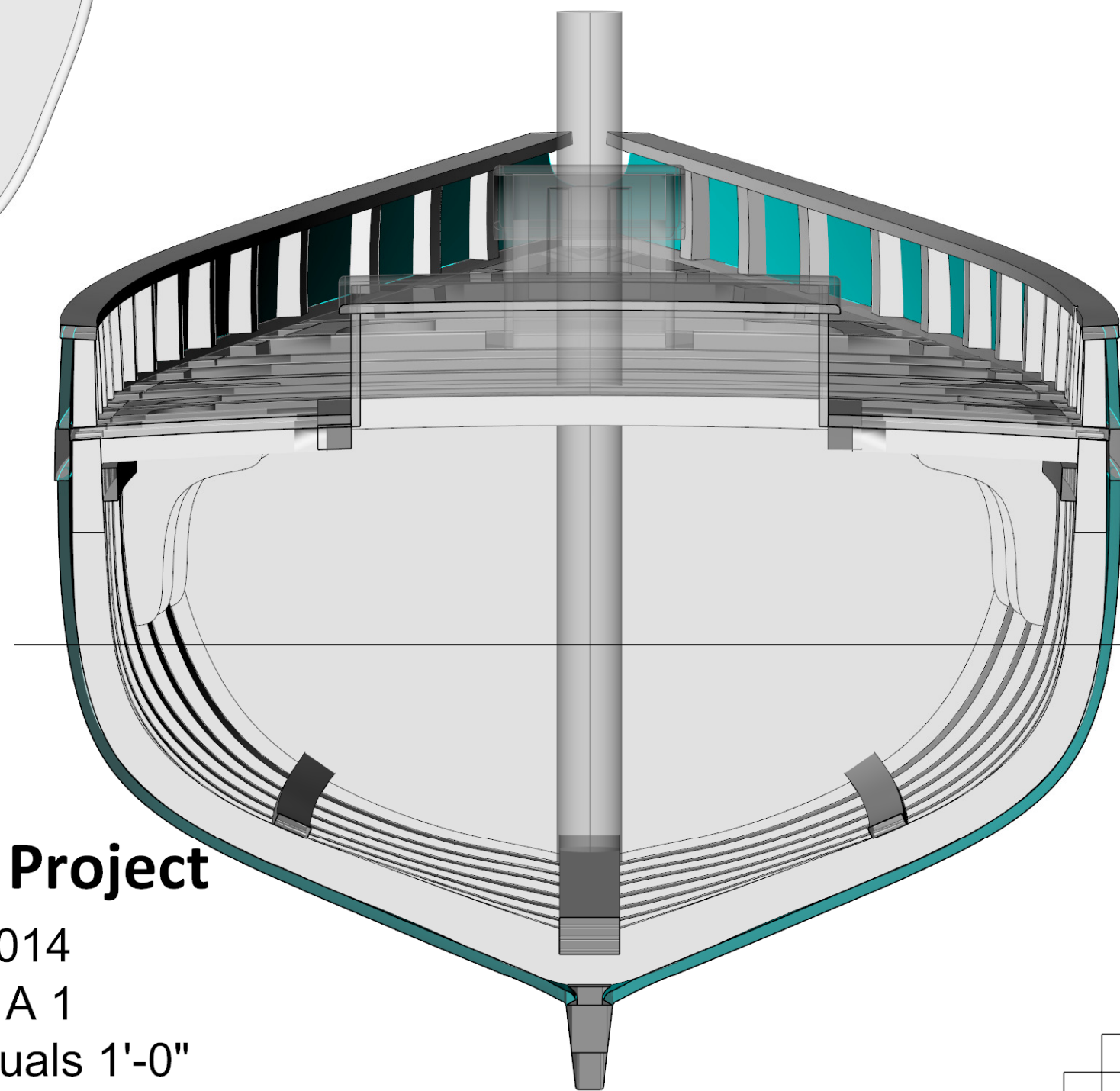
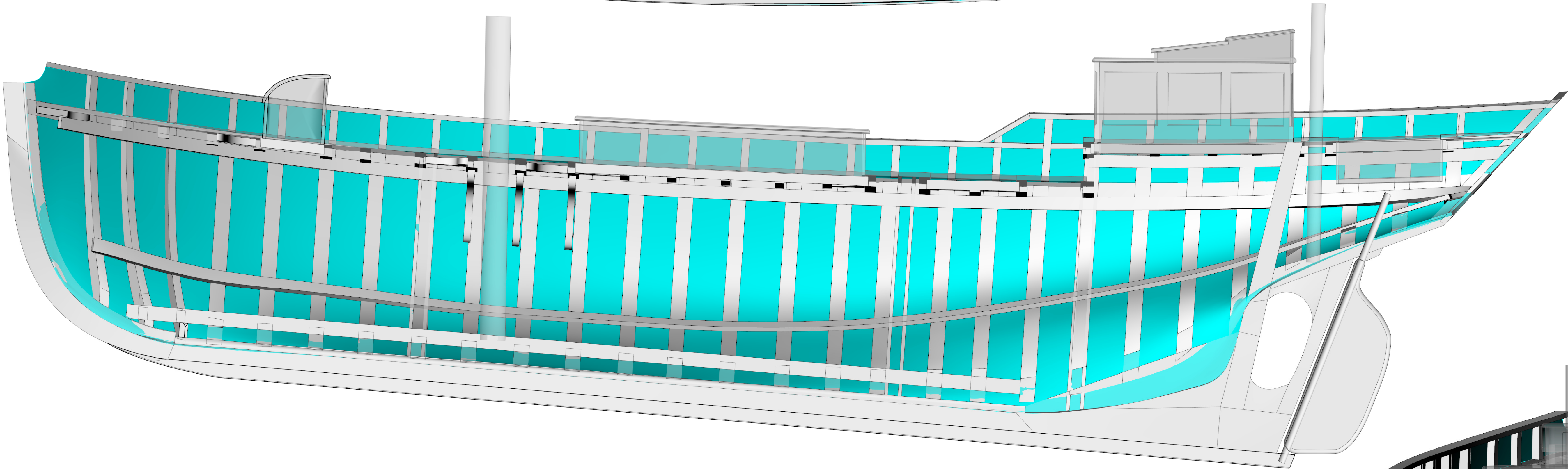
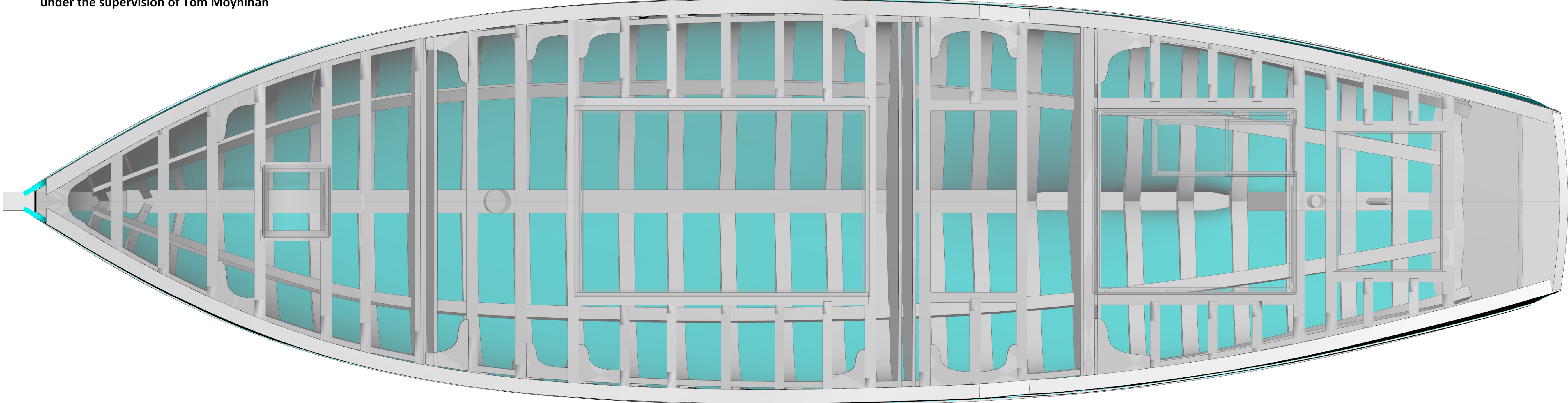


A. K. Ilen
Built 1926 The Fisheries School, Baltimore
under the supervision of Tom Moynihan

LINES PLAN

CP.....0.592 AWP.....507.5 ft² (47.15 m²) WSA.....835.3 ft² (77.6 m²) LCB.....51.2% 2708 lbs/in (xxx kg/cm) Ballast & Cargo.....22tons (22.35 tonnes)



NOTES
This lines plan was produced by 3D laser scanning
the Original Vessel
Lines drawn to outside of planking

PRINCIPAL PARTICULARS
Length Overall (On Deck).....56' - 0" (17.07m)
Length W.L.....49' - 2" (14.98m)
Beam.....14' - 6" (4.42m)
Draught 8' - 0" (2.44m)
Displacement.....39.83 tons (40.47 tonnes)

Traditional Boats of Ireland Project

DRAWN	P. Tanner	DATE	02/10/2014
DRAWING NUMBER	2	SHEET	1 of 1 - A 1
MODEL UNITS	Feet	SCALE	1/2" equals 1'-0"