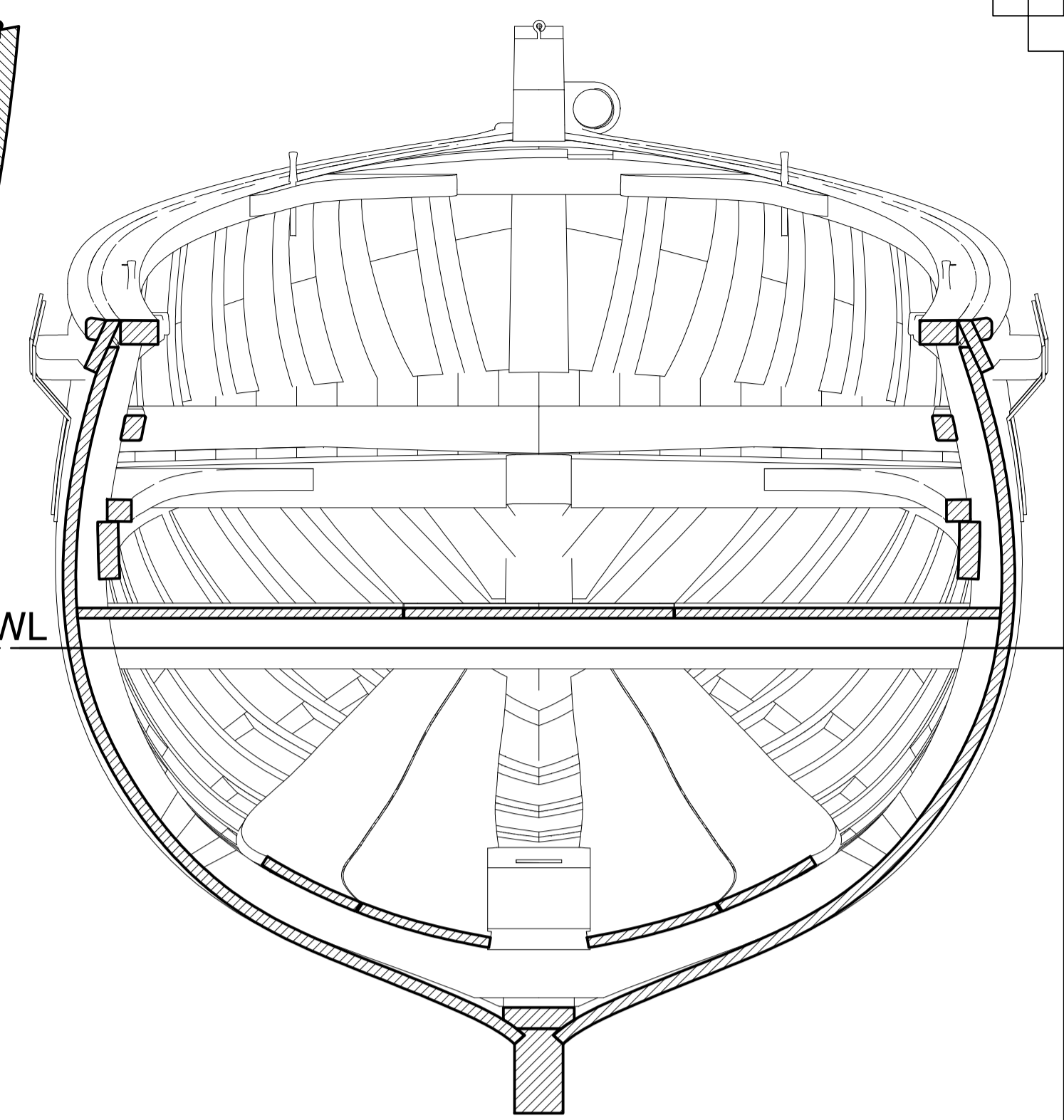
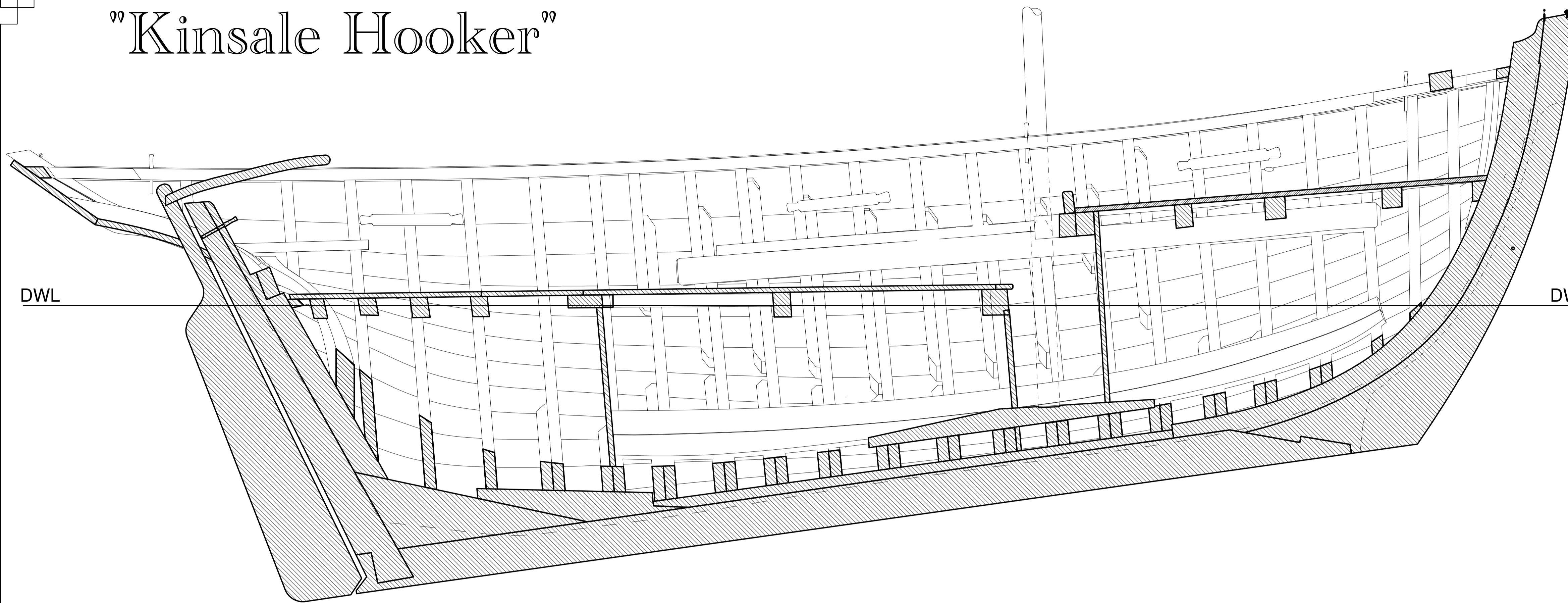
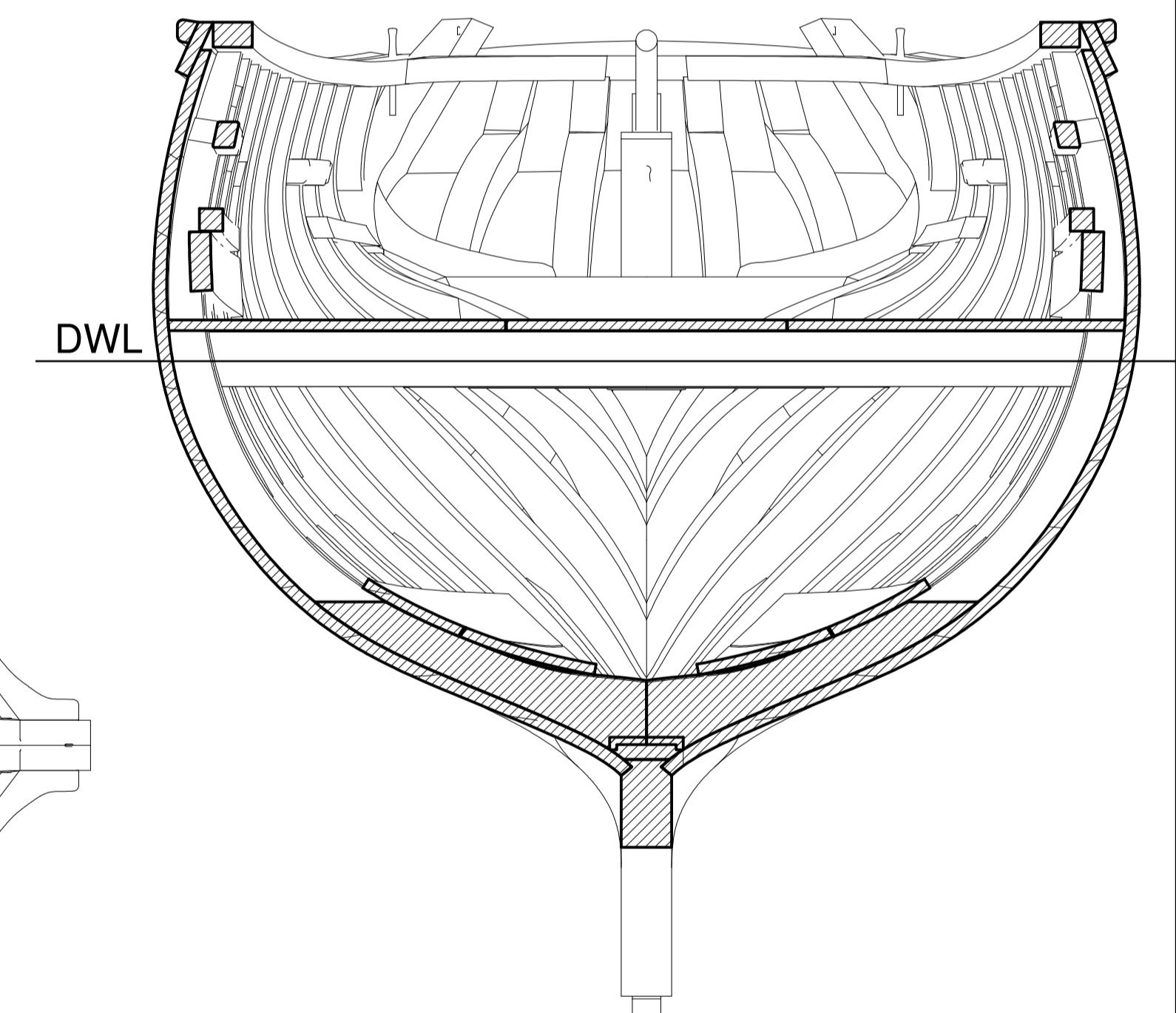
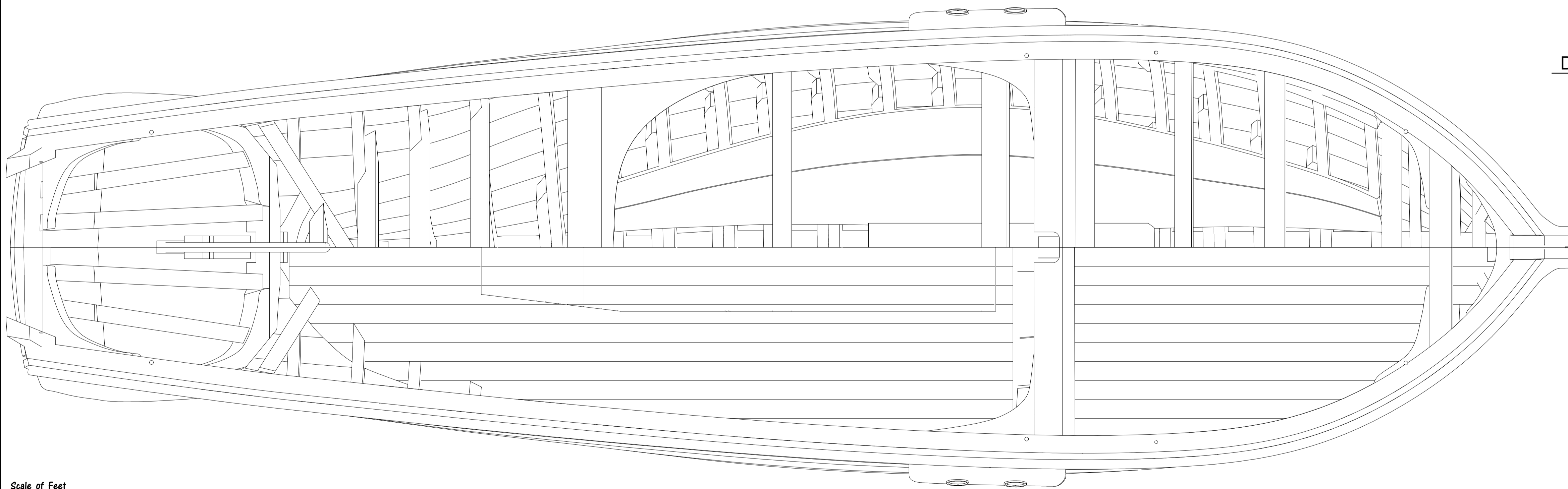


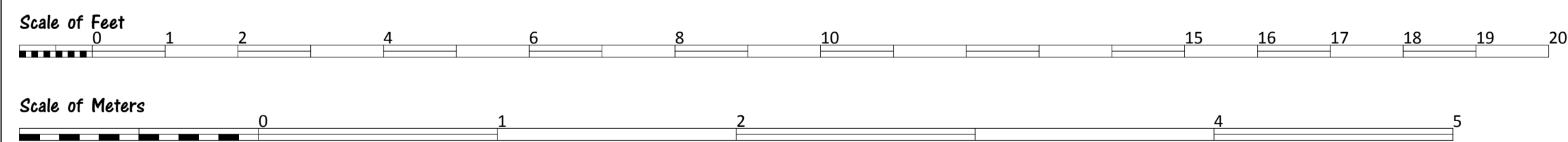
# "Kinsale Hooker"



**Mid Ship Section looking forward**



**Mid Ship Section looking aft**



**PRINCIPAL PARTICULARS**

Length Overall (On Deck).....	12.35 m (40' - 6 1/2")
Length W.L.....	9.98 m (32' - 9 1/2")
Beam.....	3.59 m ( 11' - 9 1/2")
Draught .....	2.27 m ( 7' - 5 1/2")
Depth .....	4.58 m ( 15' - 0 1/2")
Displacement.....	21.5 tonnes (21.15 tons)

## Traditional Boats of Ireland Project

DRAWN <b>P. Tanner</b>	DATE <b>12/10/2011</b>
DRAWING NUMBER <b>3a</b>	SHEET <b>3 of 4 - A1</b>
MODEL UNITS <b>Meters</b>	SCALE <b>1:20</b>

**NOTES**  
 This lines which are the basis for this drawing were produced by 3D laser scanning the National Museum Model

## Construction Drawing

CP.....0.579 AWP.....25.195 m<sup>2</sup> (271.2 ft<sup>2</sup>) WSA.....45.072 m<sup>2</sup> ( 485.15 ft<sup>2</sup>) LCB.....51% 258 kg/cm (1448 lbs/in) Ballast & Cargo.....12.9 tonnes (12.69 tons)